

8th May 2017

GULLEN SOLAR FARM CONSTRUCTION

PROJECT UPDATE: ADVICE TO NEIGHBOURS

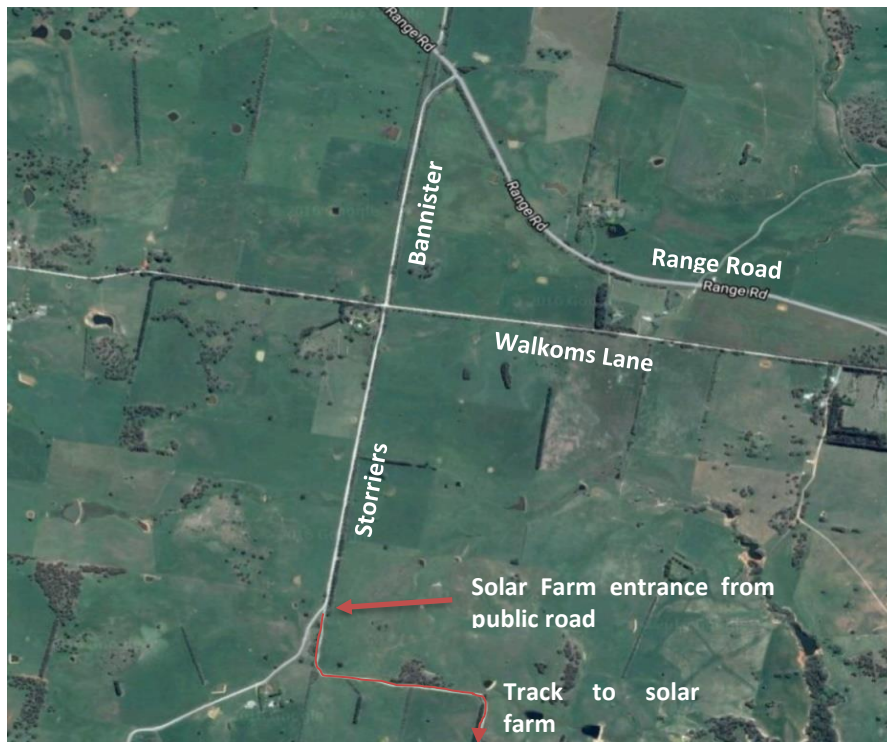
Gullen Solar Farm onsite construction works have progressed well in the past month. Piling is now complete. PV panel framing components assembly is largely finished, and PV panel installation is well underway. The perimeter fencing around the solar farm is now complete including all security gates.

Civil works onsite are now finished. Hydromulching to generate rapid ground cover has also been completed. Cable trenching works have continued this month, and are expected to be completed in the next month weather permitting. DC cabling will also continue through this month. Truck deliveries to site are now less frequent going forward as most of the construction materials are now onsite.

Landscape screening works are expected to begin this month. Electrical works will now start to progress including installation of combiner boxes and PCB's.

We will contact you next month with a further project update.

GENERAL PROJECT INFORMATION



Site location

The construction period is scheduled to continue through to June 2017, with Commissioning and Generation to follow.

| | 2016 | | 2017 | | | | | | | | |
|--|------|---|---------|---|---|---|---|---|---|---|---|
| | N | D | XMAS | J | F | M | A | M | J | J | A |
| SITE INVESTIGATION (SURVEYS, FINAL PLANNING) | | | HOLIDAY | | | | | | | | |
| STORRIER LANE WORKS | | | | | | | | | | | |
| SITE ESTABLISHMENT COMMENCES | | | | | | | | | | | |
| CONIFER WIND ROW FELLING AND MULCHING | | | | | | | | | | | |
| DELIVERIES COMMENCE & CONTINUE | | | | | | | | | | | |
| CONSTRUCTION | | | | | | | | | | | |
| COMMISSIONING | | | | | | | | | | | |
| GENERATION COMMENCES | | | | | | | | | | | |
| CONSTRUCTION DEMOBILISATION | | | | | | | | | | | |
| SOLAR FARM OPERATION COMMENCES | | | | | | | | | | | |

The solar farm is being constructed by a company called Decmil Balance.

Gullen Solar P/L will be represented on site by Bruce Payne (phone contact during business hours: 0428 173 643). Complaints, compliments or enquires can be made via the Gullen Solar website (www.gullensolarfarm.com), by calling 1800 725 270 or by emailing info@gullensolarfarm.com .

Heavy vehicle deliveries to site will be via Crookwell Road and Kialla Road. All construction works will be conducted in accordance with the Notice of Determination of the Development Application Ref. 7/2016 issued by Upper Lachlan Shire Council on 22nd June 2016.

In order to maintain the information flow to neighbouring landowners, Gullen Solar intends to distribute progress and updated forecasts on a monthly basis throughout the construction phase.

In September 2016, Gullen Solar P/L was purchased from Goldwind by New Gullen Range Wind Farm P/L, meaning that the wind farm and the solar farm have the same owners (25% Goldwind and 75% Beijing Jingneng Clean Energy). If you would like to be added to our email list for wind farm and solar farm information then please send an email to this effect to info@gullensolarfarm.com or info@gullenrangewindfarm.com